



RTCU M2M Studio

Professional M2M and IoT Development!

Unified Application Environment

The **RTCU M2M Studio** is a comprehensive development environment designed for the creation of both basic and highly advanced M2M and IoT applications. It serves as a singular, high-performance workspace that facilitates the entire project lifecycle.

As a unified platform, the **RTCU M2M Studio** eliminates the requirement for external programs by consolidating all essential tasks—from coding and project management to final deployment—into a synchronized framework. This ensures that source code, execution jobs, and file assets are managed with complete consistency.

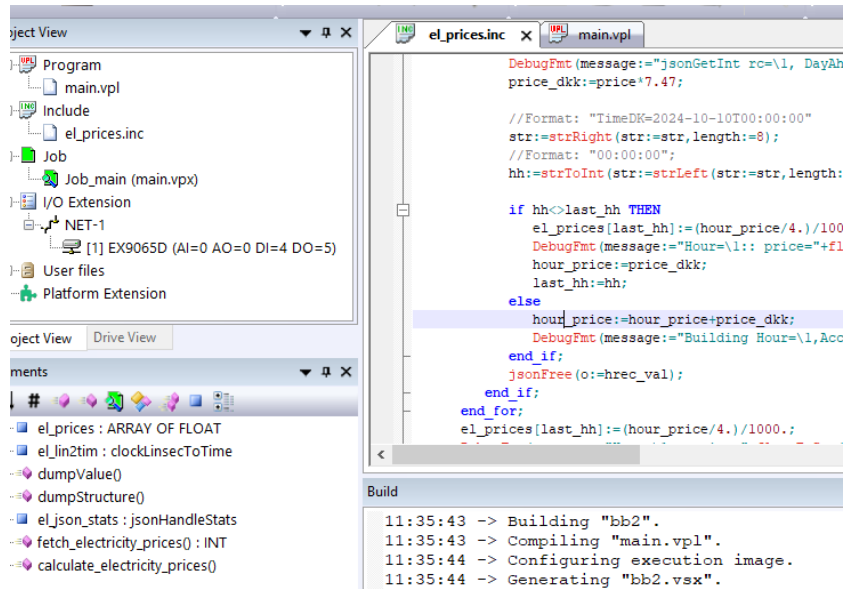
This environment integrates both the built-in Simulator for virtual logic testing and the optional **RTCU IEX**, allowing for a seamless transition between PC-based simulation and advanced, real-time debugging on physical hardware through to final field deployment.

Experience and Know-how

Building on more than two decades of invaluable experience in the M2M/IoT field, **Logic IO** is committed to offering the most sophisticated platform for advanced and highly demanding applications.

Our products, including **RTCU M2M Studio**, are the result of this accumulated experience combined with valuable feedback from professional and mission-critical applications deployed worldwide.

RTCU products are deployed **underground, stationary, on the road, at sea, on the rail, and in the skies!** - In any imaginable application and environment.



RTCU M2M Studio Highlights

- ◆ **Unified Development Environment**
Centralizes project control, automated deployment, and firmware management into a single workspace, eliminating the need for third-party tools.
- ◆ **Intelligent Programming Tools**
Enhanced editor featuring real-time parameter suggestions, syntax highlighting, and centralized navigation for all project variables and I/O elements.
- ◆ **Advanced Simulation & Debugging**
Combines virtual PC-based emulation with the RTCU IEX for high-precision, real-time hardware debugging and live variable manipulation via the Insight! tool.
- ◆ **Flexible Deployment & Connectivity**
Supports both local programming cable connections and remote field management.

Find out more and start developing today!

Learn more about the **RTCU M2M platform** and start enjoying RTCU Technology today with the **RTCU M2M Studio**

Also make sure to get the **RTCU IEX**, **RTCU Communication Hub**, and the **RTCU Deployment Server** to get a hands-on experience how rapid development/deployment of game changing M2M/IoT applications were meant to be.

Please visit www.logicio.com

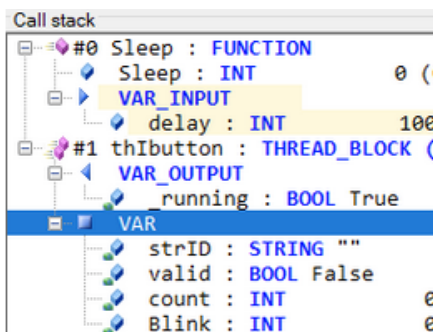


Intelligent Programming

- ◆ **Automatic Parameter Suggestion:** Displays parameters in real-time as functions are entered, ensuring API compliance without external referencing.
- ◆ **Variable and Element Overview:** Provides centralized navigation and status tracking for all variables, constants, and I/O elements across the project.
- ◆ **Syntax Highlighting Editor:** Automatically applies color-coding to keywords, comments, and variables to maximize code structure and readability.
- ◆ **VPL Code Generator:** Assists in the implementation of the VPL language and complex functions, aiding in the recall of infrequently used syntax.
- ◆ **Integrated Documentation:** Offers immediate, searchable access to help files for language syntax and built-in functions directly from the interface.

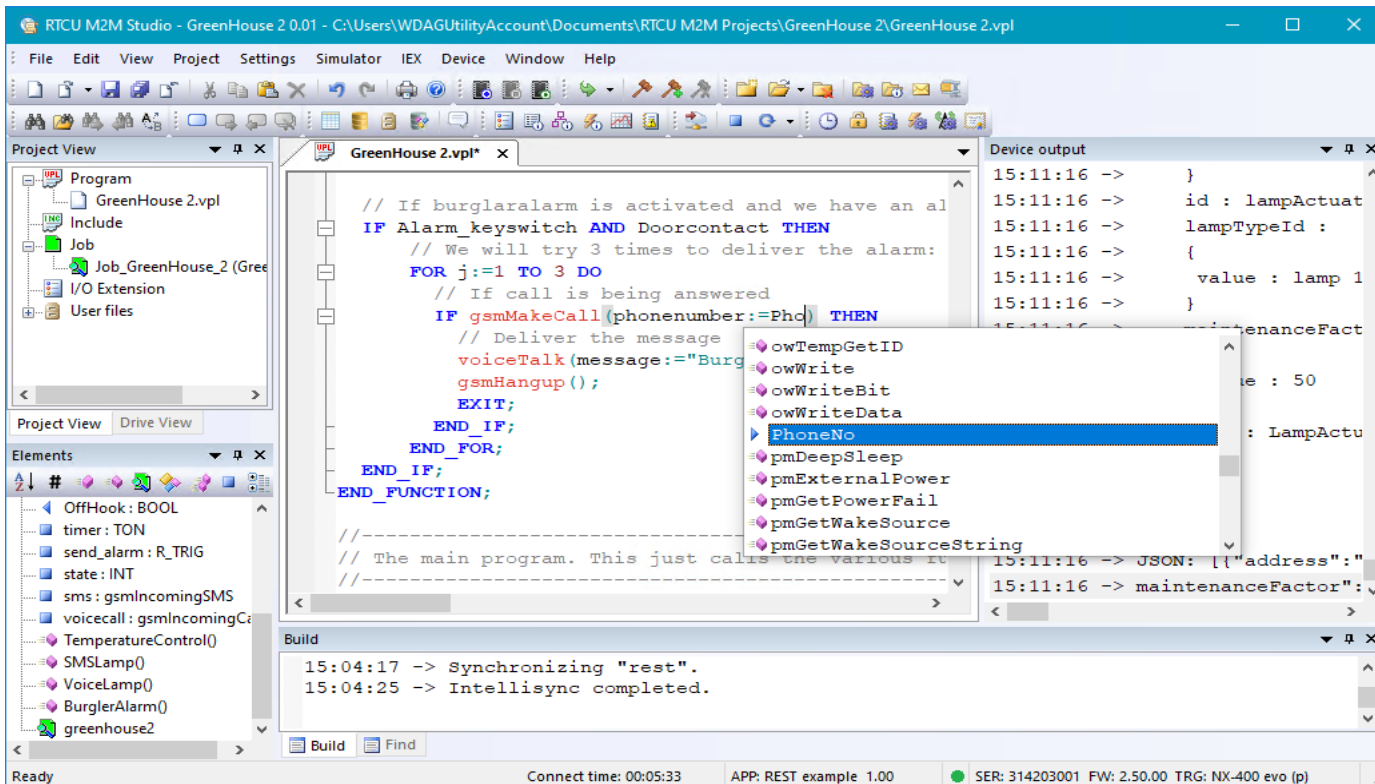
Integrated RTCU Simulator

- ◆ **Hardware Simulation** Simulates digital/analog I/O, the real-time clock, and network interfaces on a Windows PC.
- ◆ **Communication Testing** Features full interaction with phone functions, including simulated SMS messaging and network data transfers.
- ◆ **Interactive Monitoring** Allows for the manual control of inputs and real-time observation of output statuses.



RTCU Instrumented Execution

- ◆ **RTCU IEX** Separately installed, but fully integrated with the RTCU M2M Studio environment.
- ◆ **Real-Hardware Debugging** Executes and analyzes applications on physical NX32L-based devices for precise timing and hardware interaction.
- ◆ **Live Manipulation Insight!** Enables the real-time reading and writing of global variables during execution, allowing for dynamic testing without recompilation.
- ◆ **Execution Transparency** Provides visibility into the call stack and thread status, with the ability to pause, resume, and set coded breakpoints.



Logic IO Worldwide Headquarters

Holmboes Allé 14
8700 Horsens
Denmark
Phone: +45 7625 0210
Fax: +45 7625 0211
Commercial enquiries: sales@logicio.com
Technical support: support@logicio.com
www.logicio.com