

RTCU Emulator - User's manual

Version 1.60

© 2019 Logic IO, www.logicio.com

1.	RTCU Emulator	3
1.1	Limitations	5
1.2	Command line arguments	6
1.3	Control Panel	7
1.3.1	Menu Items	10
1.3.2	Devices	11
1.3.3	Settings	12
1.4	Modules	13
1.4.1	Core	13
1.4.1.1	Debug Messages	14
1.4.1.2	IO	14
1.4.1.3	Memory	16
1.4.1.4	Power Management	17
1.4.2	Data	18
1.4.2.1	Datalogger	18
1.4.2.2	File System	19
1.4.2.3	Persistent Data	21
1.4.3	Communication	23
1.4.3.1	1-Wire	23
1.4.3.2	CAN	24
1.4.3.3	Display	26
1.4.3.4	GSM	26
1.4.3.5	Network	32
1.4.3.6	RF	34
1.4.3.7	Serial Ports	36
1.4.3.7.1	Physical Serial Ports	36
1.4.3.7.2	Virtual Serial Ports	37
1.4.3.7.3	Virtual MDT	39
1.4.4	Sensors	40
1.4.4.1	Accelerometer/Vibration	40
1.4.4.2	GPS	42
1.4.4.3	Intrusion	44
1.4.4.4	Real Time Clock	44
1.4.4.5	Temperature	45
2.	Integration with the RTCU IDE	46
3.	Contact information	48

RTCU Emulator

1 RTCU Emulator

The **RTCU Emulator** is a separately installable virtual execution environment that precisely emulates all current RTCU devices.

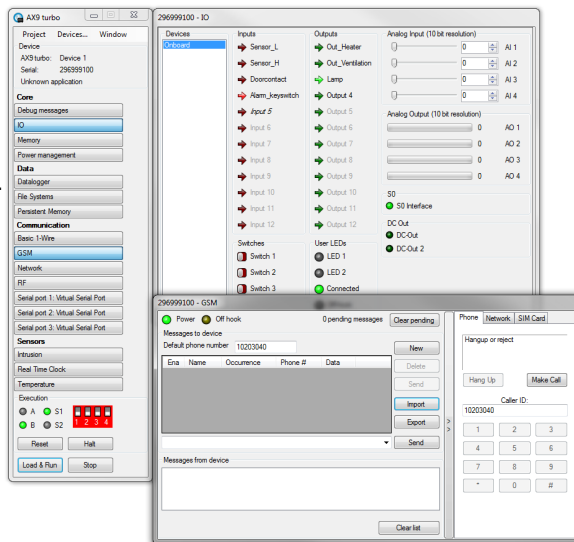
The **RTCU Emulator** can be used as a stand-alone tool or it can be [integrated](#) swiftly into the RTCU IDE in order to make coding and test tightly connected.

The **RTCU Emulator** is based on the same source code as the actual RTCU device firmware. Almost all features and the behavior of each and every physical device are precisely emulated. This ensures a precise emulation with only a few [limitations](#).

Using the **RTCU Emulator** gives the developer a very powerful tool allowing test and debugging of applications in the convenience of a Windows environment - without any need for a physical RTCU device.

RTCU Emulator advantages:

- Based on the RTCU M2M Platform.
- Precise RTCU device emulation.
- Device specific emulation.
- Protected Execution Environment.
- Multiple devices with separate instance state.
- Device file-system using VHD files.
- Virtual Programming cable connection.
- Remote access over the RTCU Gateway.
- RTCU Deployment Server support.
- Powerful RTCU IDE integration.
- Download **FREE** from www.logicio.com



The Emulator starts up with the main window, the [Control Panel](#).

From the Control Panel, the rest of the [windows](#) can be opened, e.g. the [GSM](#) and [IO](#) windows, as shown above.

1.1 Limitations

The RTCU Emulator offers a very precise and comprehensive emulation of the physical RTCU devices, but still there are some limitations implied:

- The timing of the individual operation may vary compared to the physical device.
- The buzzer does not support different frequencies.
- Generic 1-wire is not supported.
- RFBC packets must be manually created, using the sender and receiver fields as raw data.
- The batConsumption functions are not supported.
- gsmModemMode is not supported and will return 2.
- gsmNetworkTime is not supported.
- gsmHeadset is not supported and will return FALSE when called.
- gsmHandsfree is not supported and will return 5, on devices normally supporting this.
- Bluetooth is not supported.
- Adding options are not supported, the devices are already fully upgraded.
- xVoice is not supported.
- The GPRS monitor can be configured but does not perform recovery on the connection.

Some of the above limitations are scheduled to be eliminated in future releases.

1.2 Command line arguments

The emulator can be started from the command line like this:

```
RTCUEmulator.exe [options] <Project file>
```

<Project file> is the path to the project or the application files(.prj, .rpc or .vsx) to open from the start.

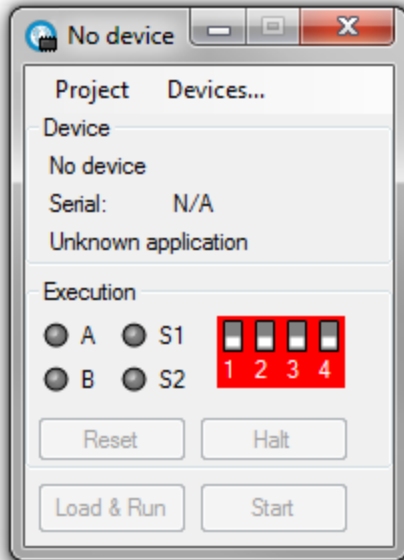
The available options are as follows:

- | | |
|--------------------|--|
| -a | Start the application automatically when the emulator is started. |
| -p <port number> | The TCP/IP port to start listening on for commands. Used by the IDE to load the current project. |
| -d <serial number> | The serial number of the device to load. |
| -m | Start minimized |

1.3 Control Panel

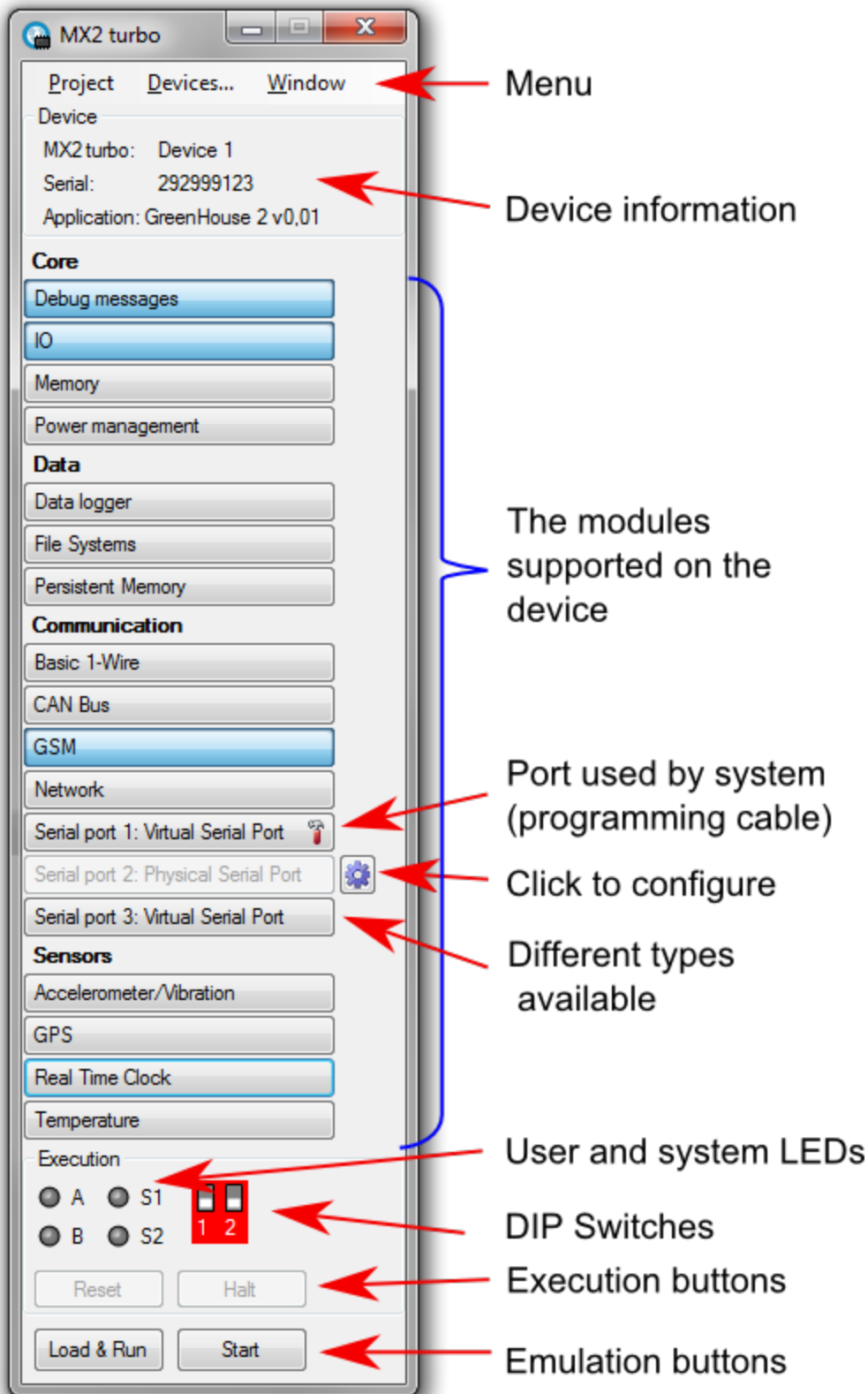
The control panel is the main window of the emulator. It controls which project to run, which device to run it on and controls which other windows to show.

On the initial start and when no device is loaded, it looks like this:



To load a device, click on the [Devices...](#) menu item.

When a device is loaded, the control panel looks like this:



Menu items

Used to configure the emulator.

Device information

The device information panel shows the type, serial number and type of the emulated device, as well as the possible name of a loaded application.

Supported modules

This lists the available [modules, sorted by area](#).

Clicking the button will show the window for the module.

When a button is disabled, no window is needed for this module.

When the gear symbol is available, it can be clicked to bring up the configuration dialog for the module. Some modules have multiple implementations such as the serial ports. By right clicking on the button, a menu pops up to select what implementation to use.

Configuration and selection of implementations can only be done while the emulator is stopped.

When a small hammer is shown on a serial port module, that serial port is in use by the system and has been decoupled from the VPL interface.

This typically happens when the [virtual programming cable](#) is connected or when an alternative serial port has been selected.

If an alternative serial port is selected, it is possible to use the physical serial port module to connect the emulator to the IDE.

LEDs and DIP switches

All the LEDs and DIP switches of the physical devices are available.

Execution buttons

The reset button resets the device, as on a physical device.

The halt button halts the execution in the device.

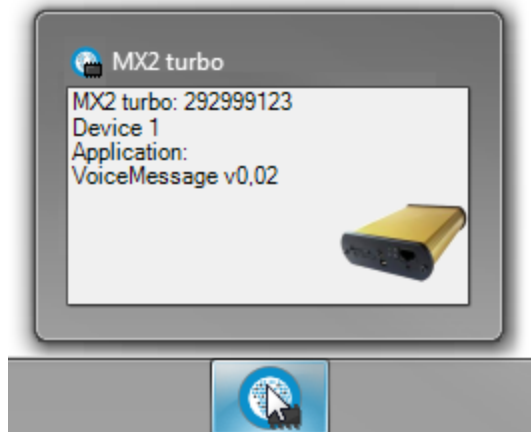
Emulation buttons

The Load & Run button loads the selected project(shown in tooltip) into the device and starts the emulation.

The Start button is used to start the emulation, without loading the project.

The Stop button is used to stop the emulation.

Only available on Windows 7 and newer:



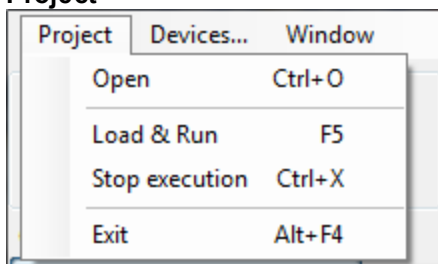
Hovering over the icon on the task bar shows information about the device in the Emulator.

1.3.1 Menu Items

The menu items are used to configure the emulator.



Project

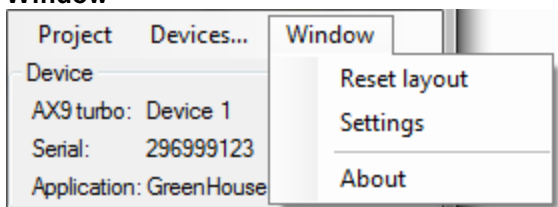


- | | |
|------------------|--|
| ○ Open | Opens an application. |
| ○ Load & Run | Loads the application into the device and starts it |
| ○ Stop execution | Stops the emulation of the device. The same as pressing the Stop button. |
| ○ Exit | Exits the emulator. |

Devices...

Shows the [Devices](#) dialog

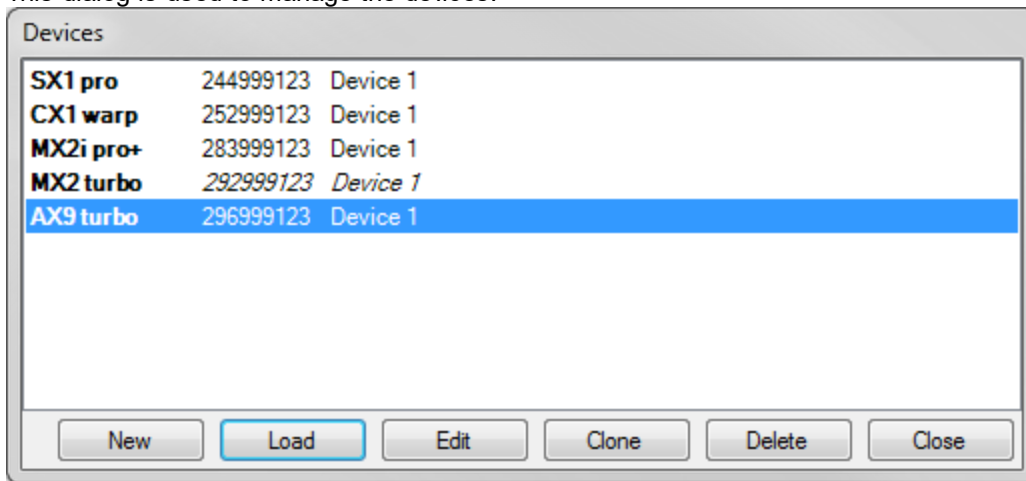
Window



- | | |
|----------------|--|
| ○ Reset Layout | Places all the windows next to the control panel. |
| ○ Settings | Opens a dialog to configure the settings of the emulator. |
| ○ About | Shows an about dialog with the version number of the Emulator. |

1.3.2 Devices

This dialog is used to manage the devices.

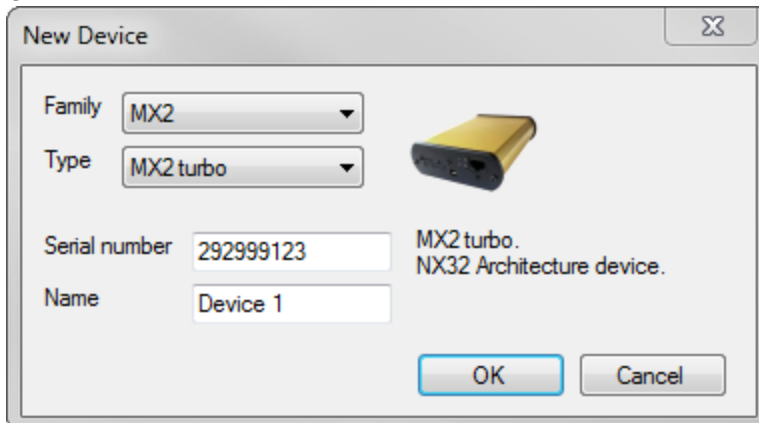


The list shows the available devices with type, serial number and name.
The active device is marked with italic.

The dialog has the following buttons:

New

Create a new device:



The first 3 digits of the serial-number specifies the device type in question and are similar to the corresponding physical device. The middle 3 digits "999" indicates that this is an emulator, it will never occur on a physical device.

Finally, the last 3 digits of the serial number can be changed to allow for multiple devices of the same type.

The name field allows for assigning a descriptive name to the device, to make it easier to recognize.

Load

Closes the active device and loads the selected device. Can also be done by double-clicking on a device.

Edit

The edit dialog allows for changing the serial number and name of the selected device.

Clone

Creates a new device, using the configuration of the selected device.
Provide the name and serial number of the new device.

Delete

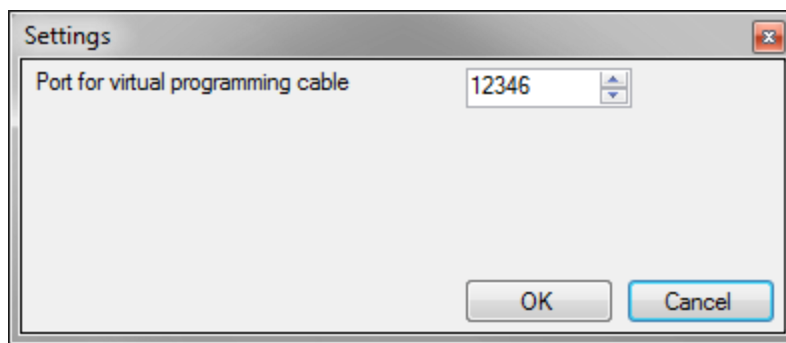
Delete the selected device.

Close

Closes the dialog.

1.3.3 Settings

This dialog is used to configure the settings of the emulator.



Port for virtual programming cable

Selects the TCP port to use for the [virtual programming port](#). Must match the port number used in the RTCU IDE.

1.4 Modules

The different modules have their own windows for managing the emulated hardware. The modules are sorted by area for a better overview.

- **Core**
 - [Debug Messages](#)
 - [IO](#)
 - [Memory](#)
 - [Power Management](#)
- **Data**
 - [Data Logger](#)
 - [File System](#)
 - [Persistent Data](#)
- **Communication**
 - [1-Wire](#)
 - [CAN](#)
 - [Display](#)
 - [GSM](#)
 - [Network](#)
 - [RF](#)
 - [Serial Ports](#)
- **Sensors**
 - [Accelerometer/Vibration](#)
 - [GPS](#)
 - [Intrusion](#)
 - [Real Time Clock](#)
 - [Temperature](#)

1.4.1 Core

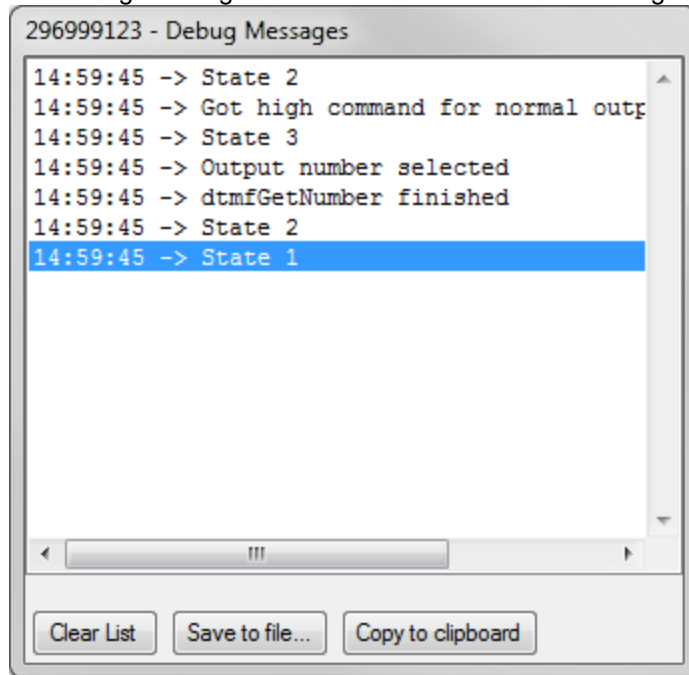
The Core area contains the functionality that is common for all RTCU devices, which does not belong in other areas.

Modules:

- [Debug Messages](#)
- [IO](#)
- [Memory](#)
- [Power Management](#)

1.4.1.1 Debug Messages

The Debug Messages window is used to show the debug output from the application.

**Clear List**

Clears the output.

Save to file...

Saves all the lines to a file.

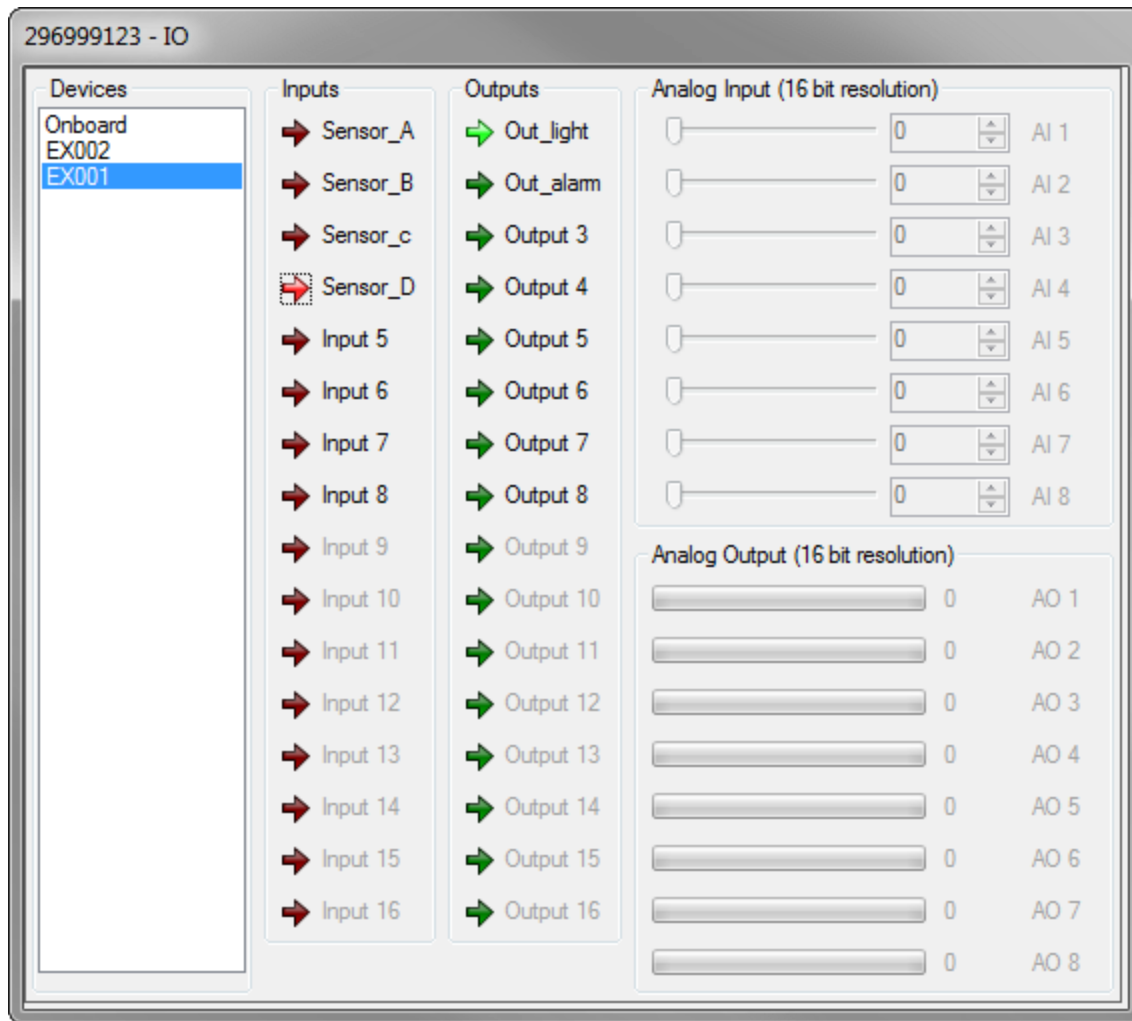
Copy to clipboard

Copies all the lines to the clipboard.

Use Ctrl+C to copy the selected lines to the clipboard.

1.4.1.2 IO

The IO window allows for controlling the inputs and viewing the outputs of the device and any configured IO extensions.



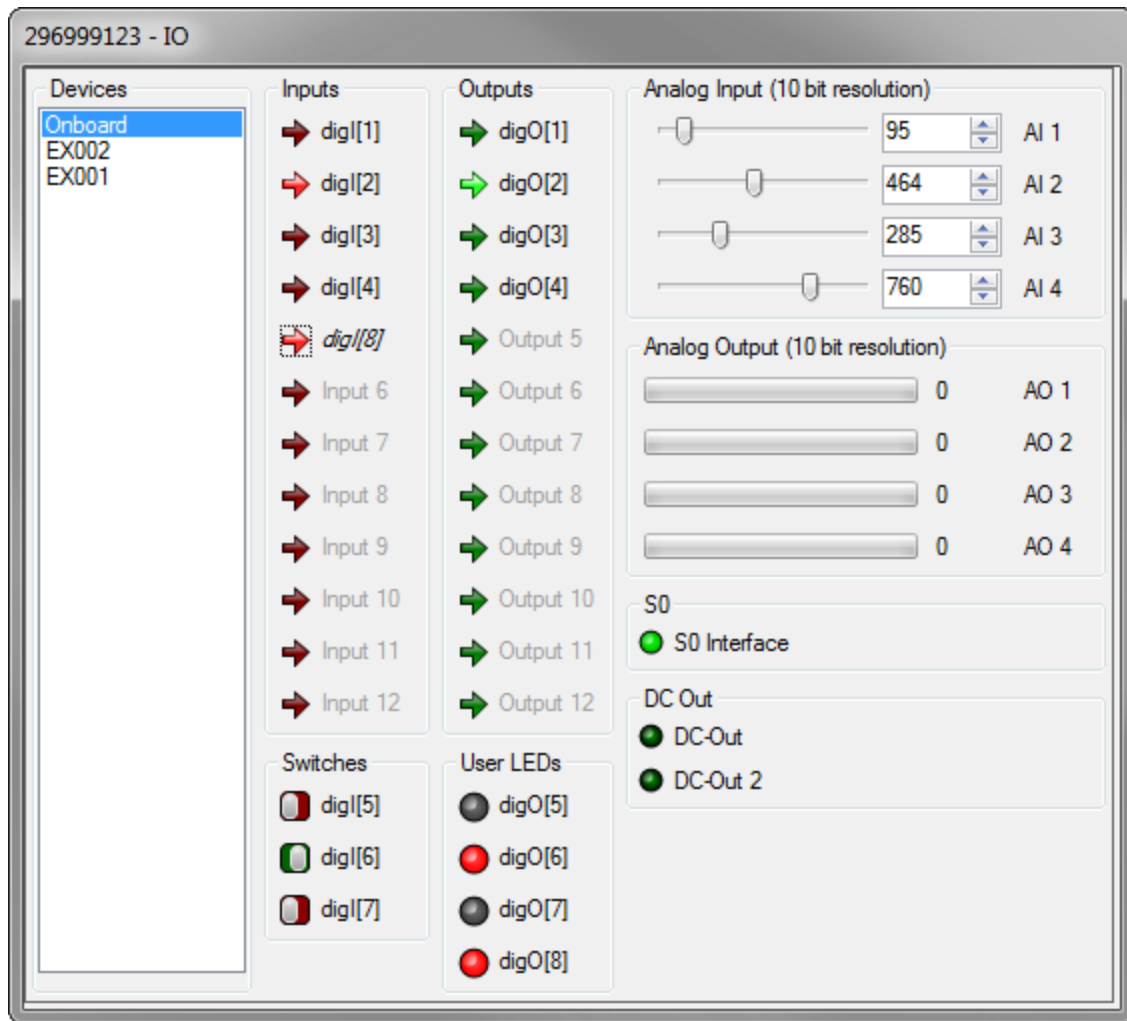
The list on the left is used to select between the onboard IO and any configured IO extensions. If a project(.prj file) has been loaded, the configured names from it will be used as names for the IOs, otherwise the default names will be used.

The red arrows shows the status of the digital inputs. Click on an input to change the state of it.

The green arrows shows the status of the digital outputs.

The value of the analog inputs can be changed on the slider or by entering a number directly. The analog outputs are shown as a bar, as well as numerically.

For the onboard IOs, additional information is available:

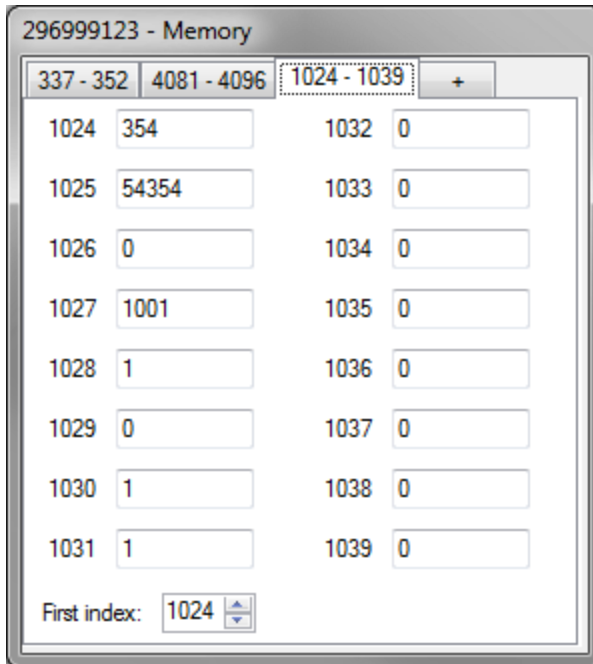


The switches show the state of the user switches. Click them to toggle the switch. The switches can also be controlled from the [control panel](#) along with any extra system switches. The User LEDs show the status of the individual user LEDs. The LEDs are also available on the [control panel](#) along with the system LEDs.

The status of the S0 interface and of the DC-Out external power supplies are shown on supporting devices.

1.4.1.3 Memory

The "Memory" window is a way of changing or viewing the contents of each memory location.



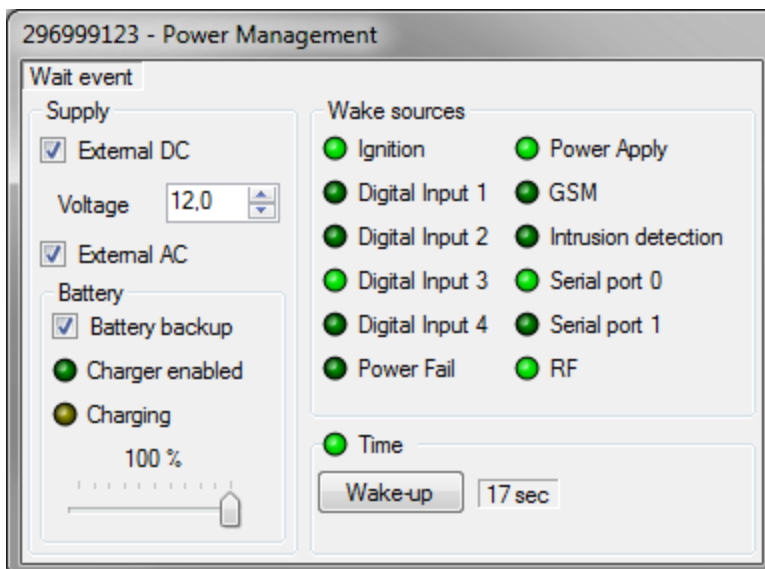
Each page shows 16 memory locations. To change the shown location, change the First index to the wanted starting location.

To add additional pages, click the "+" symbol, or right-click on a tab and click Add tab. To remove a page, click on the tab with the middle mouse button, or right-click it and select Close tab.

To change the value at a location, change the value and leave the field or press enter. While the number is being edited, it will be red. When it has been changed in the device, the text turns black again. If a memory location is used as a VAR_OUTPUT item, it is not possible to change the value as the program is overwriting the contents of the memory location with every scan.

1.4.1.4 Power Management

The Power Management window provides access to the power management functions of the device.



The label at the top shows the current power state.

Supply

Allows for connecting and removing the external power supplies and adjusting the voltage on the DC supply.

AC is only available on devices with AC.

Battery

If Battery backup is selected(restart required), the device will use the battery to continue running if no external power supply is available.

Charger enabled shows if the charger is enabled in the device and Charging shows if the battery is currently being charged.

The battery level can be seen and adjusted on the slider.

Wake sources

A list of all the available wake sources on the device. When in a power save mode, the active wake sources are highlighted.

Time

The timeout wake source, with the option to manually wake the device before the interval has elapsed, especially useful if using a long timeout.

For pmWaitEvent it shows the time until it wakes, for pmPowerDown and zpPowerDown it shows the time it will wake at.

1.4.2 Data

The Data area contains the functionality that is used to access data in the RTCU device.

Modules:

- [Datalogger](#)
- [File System](#)
- [Persistent Data](#)

1.4.2.1 Datalogger

The Datalogger window is used for manipulating the contents of the Datalogger storage in the device.

292999123 - Datalogger

Date	Time	Tag	V1	V2
26-aug-2015	23:08:45	2	11	21
26-aug-2015	23:08:45	123	10	20

Current number of records Maximum number of records

Fetch range

☐ From 26. august 2015 11:03:51

To 26. august 2015 11:03:51

☐ Tag 0

Fetch Data

Clear Log

Destroy Log

Save as...

The "Fetch range" section allows filtering the records fetched.

- "From/To" limits the records to a range determined by a "Start" and "Stop" time.
- "Tag" limits the records to a particular Tag.

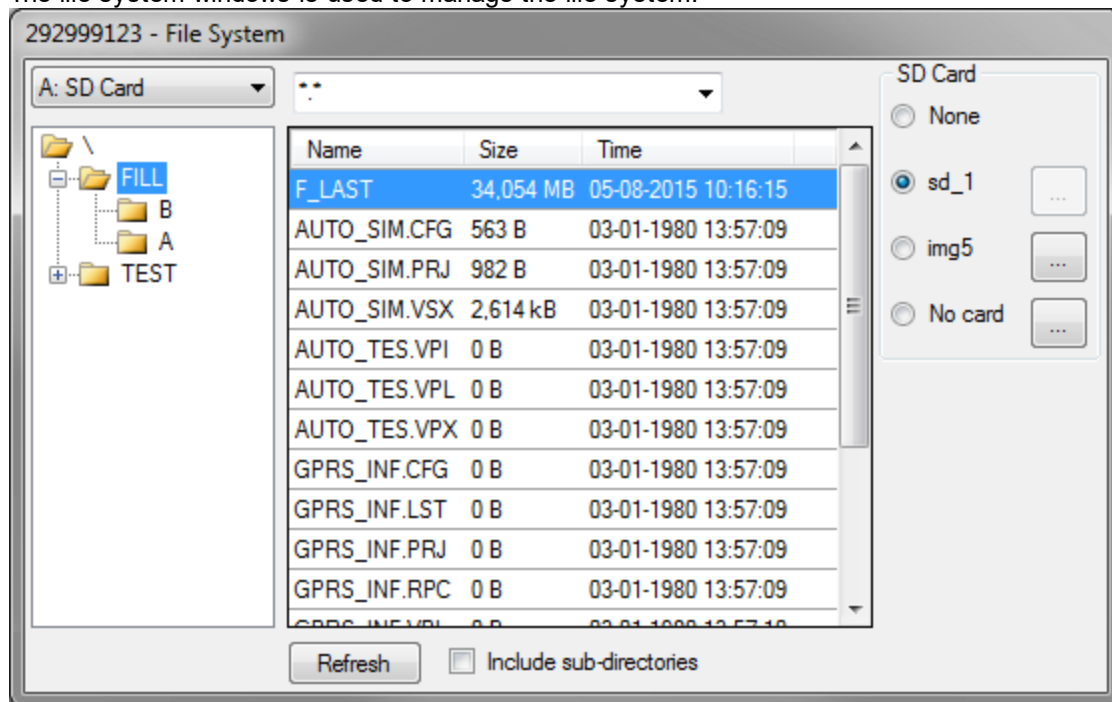
The "Clear Log" button empties the Datalogger.

The "Destroy Log" button will completely clear the Datalogger memory, as if the logDestroy function was called.

The "Save as file" button saves the data in a .CSV file for easy viewing in various spreadsheet programs etc.

1.4.2.2 File System

The file system windows is used to manage the file system.



Media selection

The drop down list allows for selecting the media to show.

Folder tree

The folder tree shows the folders available on the selected media.

Selecting a folder will show its contents in the file list.

Right-clicking on a folder allows for creating and deleting folders, and for formatting the media.

File list

The file list shows the files in the current folder, that matches the active filter.

Right-clicking a file shows a menu allowing for importing, exporting, renaming and removing the selected file.

Double-clicking on a file opens a dialog to show the contents of the file.

File filter

The file filter allows for filtering files by name. Only files containing the given text are shown. Use *.* or * to show all files.

Refresh

Click the refresh button to refresh the current folder. If the "Include sub-directories" check box is checked, any sub folders will also be refreshed.

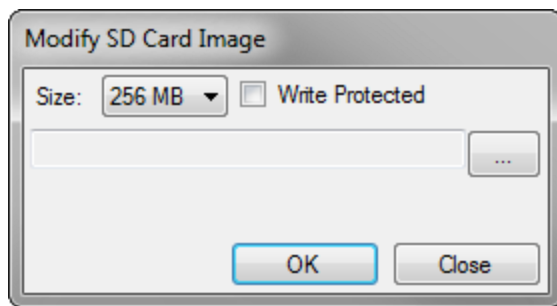
SD Card

The SD Card area is used to manage the SD Card images, used for drive A.

To change the active SD card, simply click the radio button next to the wanted image, or select None to no have any SD Card mounted.

Clicking the "..." button to the right of the name of an SD Card image, shows a dialog to control this slot. The currently selected image can not be modified while the device is running.

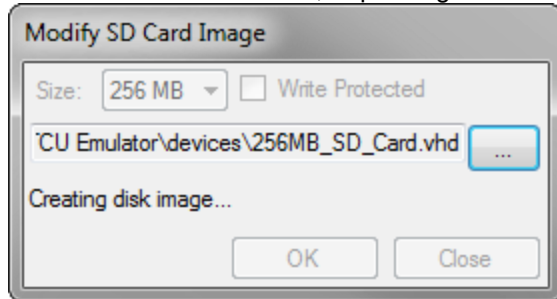
Modify SD Card Image



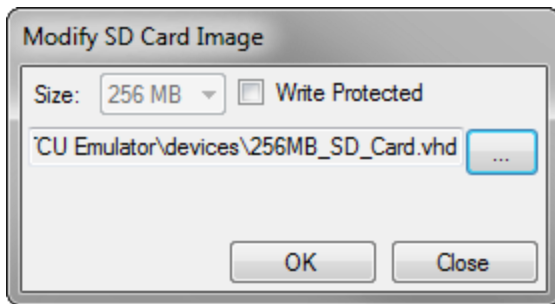
Pressing the "..." button will show a dialog to select the name of the SD Card image. Both new files and existing files can be used.

If a new file is used, the size and the write protection must be chosen, and OK pressed to begin the creation of the image.

This make take some time, depending on the size of the image.



For existing images, only the write protection can be chosen.



SD Card images

The SD card images are fixed VHD (Virtual Hard Disk) files. The VHD files can be mounted as disk drives in Windows using the Disk Management tool in Windows.

The exact steps may change depending on the Windows version.

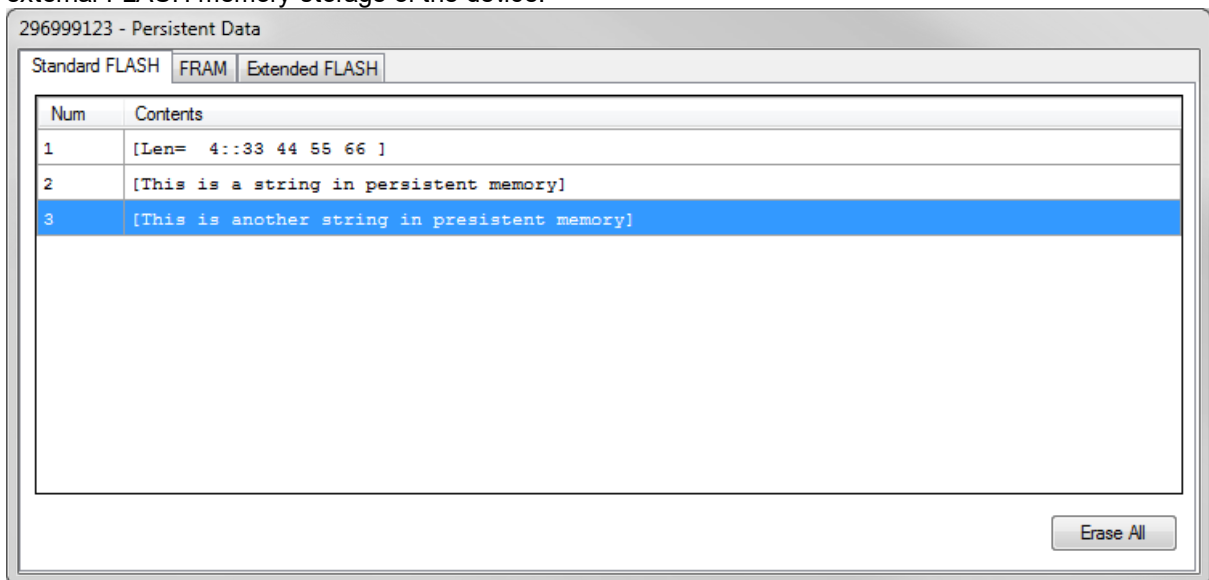
For Windows 7 the following steps work:

1. Open the Start menu.
2. Right-click on Computer and click Manage.
3. Expand Storage and Select Disk Management.
4. Click on the Action menu and select Attach VHD.
5. Find the wanted SD Card image and click OK.
6. The image is now mounted and will appear as a new disk drive.

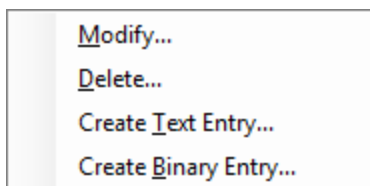
To detach the image, right-click on the disk entry for the image in Disk Management and select Detach VHD.

1.4.2.3 Persistent Data

Using the Persistent Data window, it is possible to manipulate the persistent FLASH, FRAM and external FLASH memory storage of the device.



Right clicking on the list shows the following menu:



Modify

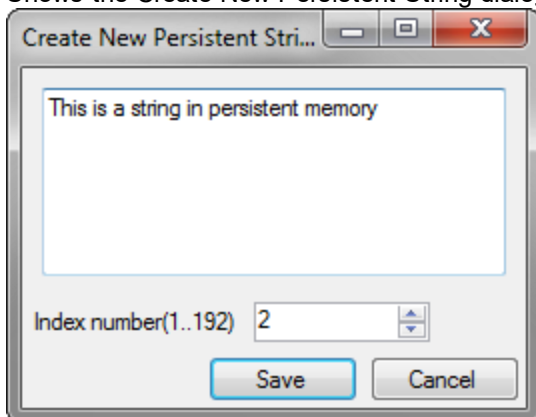
Modifies the selected entry

Delete

Deletes the selected entry

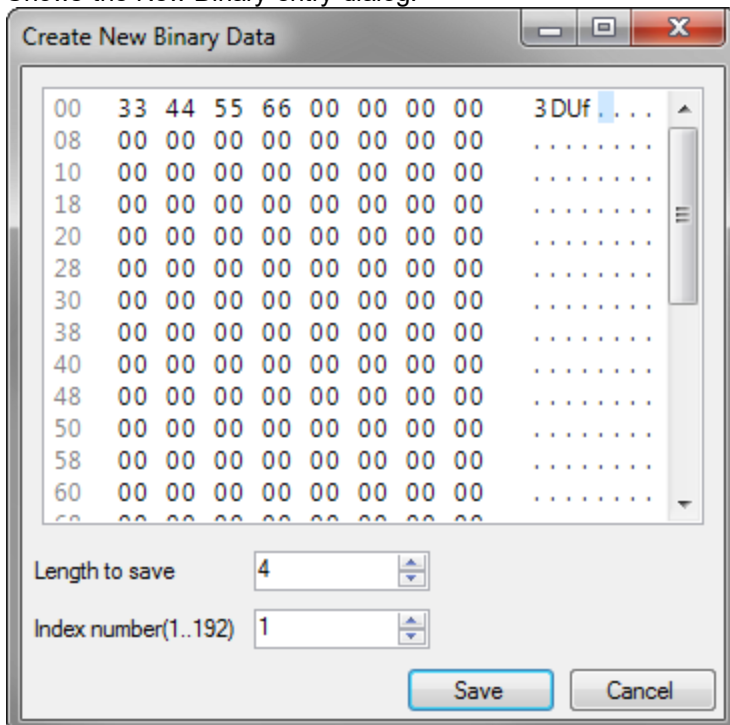
Create Text Entry

Shows the Create New Persistent String dialog:



Create Binary Entry

Shows the New Binary entry dialog:



1.4.3 Communication

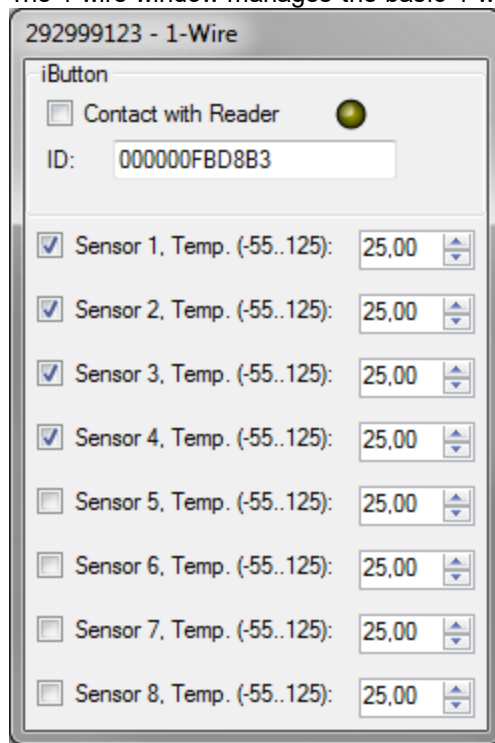
The Communication area contains functionality that is used to communicate with peripheral things.

Modules:

- [1-Wire](#) (only available on supported devices)
- [CAN](#) (only available on supported devices)
- [Display](#) (only available on supported devices)
- [GSM](#)
- [Network](#)
- [RF](#) (only available on supported devices)
- [Serial Ports](#) (only available on supported devices)

1.4.3.1 1-Wire

The 1-wire window manages the basic 1-wire sensors; iButton and temperature sensors.



iButton

The "Contact with Reader" check box controls if the the iButton is connected to the device.

The ID box controls the 1-Wire ID for the iButton.

The 1-Wire LED is shown next to the reader, when available.

Note: Reading and writing data to the iButton is not supported.

Temperature

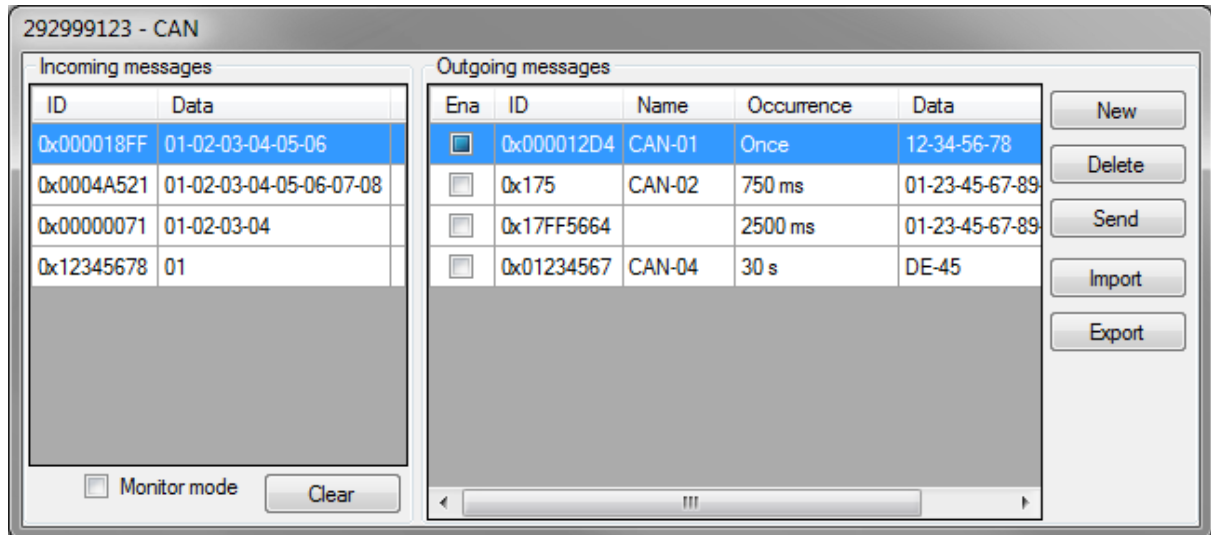
8 temperature sensors are available with different IDs, which can be seen as tool tips.

Check the check box next to the sensor to connect it to the device.

Note that the temperature is rounded to fit internal data types, and may not show the exact same value in the GUI and in the application.

1.4.3.2 CAN

The CAN window is used to simulate a CAN network.



Simulating the CAN network can be broken down into two tasks - that is receiving CAN messages from the emulated device and transmitting CAN messages to the device.

Incoming messages

The "Incoming messages" list shows the CAN messages received from the device.

The messages are listed in the order they are received - with the oldest at the top and the newest at the bottom.

When the simulated CAN network is in "Monitor" mode, the received messages are listed with a light grey background, no acknowledge is sent for the messages, and the `canSendMessage` function will fail with a timeout.

Columns

- **ID**
This column contains the identifier of the received message.
The identifier is displayed as a hexadecimal number.
- **Data**
This column contains the data bytes of the received message.
The bytes are displayed as hexadecimal numbers.

Monitor

This check box is used to select Monitor mode for the CAN network.

Monitor mode is a way for the simulated CAN network to listen and receive messages without interacting with the device.

This is the same as Monitor mode in the VPL application.

Clear

This button will remove all the received messages from the list.

Outgoing messages

The "Outgoing messages" group is used to manage the CAN messages that are available for being transmitted to the device.

An existing CAN message can be edited by double-clicking on it.

Columns:

- Name
This column contains the name of the message.
Naming the messages is not required but can make it easier to recognize what it represents.
- Occurrence
This column contains the frequency with which the message will be sent to the device once it has been enabled.
- ID
This column contains the identifier of the message.
The identifier is displayed as a hexadecimal number.
- Data
This column contains the data bytes of the message.
The bytes are displayed as hexadecimal numbers.

New

This button will create a new message.

The CAN message dialog (see below) is used to configure the new message.

Delete

This button will remove the selected message.

Send / Enable / Disable

This button will show a different title dependent on the occurrence of the selected message.

When the selected message has an occurrence of one, the button will show "Send", and the message will be sent to the device when pressed.

When the selected message is disabled (black text), the button will show "Enable", and the message will be enabled when pressed. An enabled message will be sent to the device repeatedly with the configured interval.

When the selected message is enabled (green text), the button will show "Disable", and the message will be disabled when pressed. A disabled message will no longer be sent to the device.

Import

This button will import a previously exported collection of messages and add it to the list.

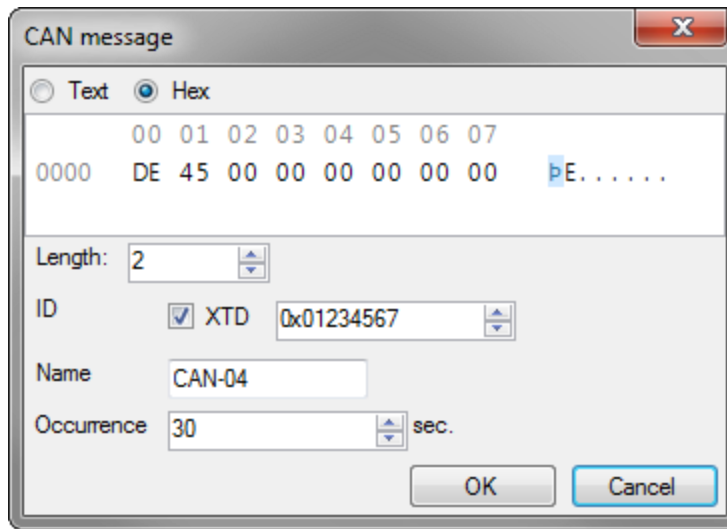
Export

This button will export the messages from the group as a collection of messages.

The CAN message collection is stored in a human readable XML file.

Modify CAN message

The modify CAN message dialog is used to create and modify CAN messages.



ID

This is the message identifier. If XTD is selected, it is an extended identifier.

Name

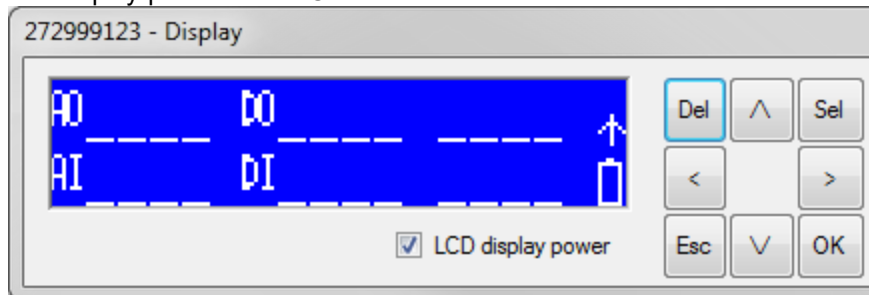
The name of the message. It is not required, but can be helpful to keep track of the messages.

Occurrence

The occurrence determines if the message must be manually sent or if it automatically is sent at the specified interval, e.g. setting the occurrence to 120 seconds will send the message every two minutes.

1.4.3.3 Display

The display provides the LCD and buttons as found on the DX4 devices.



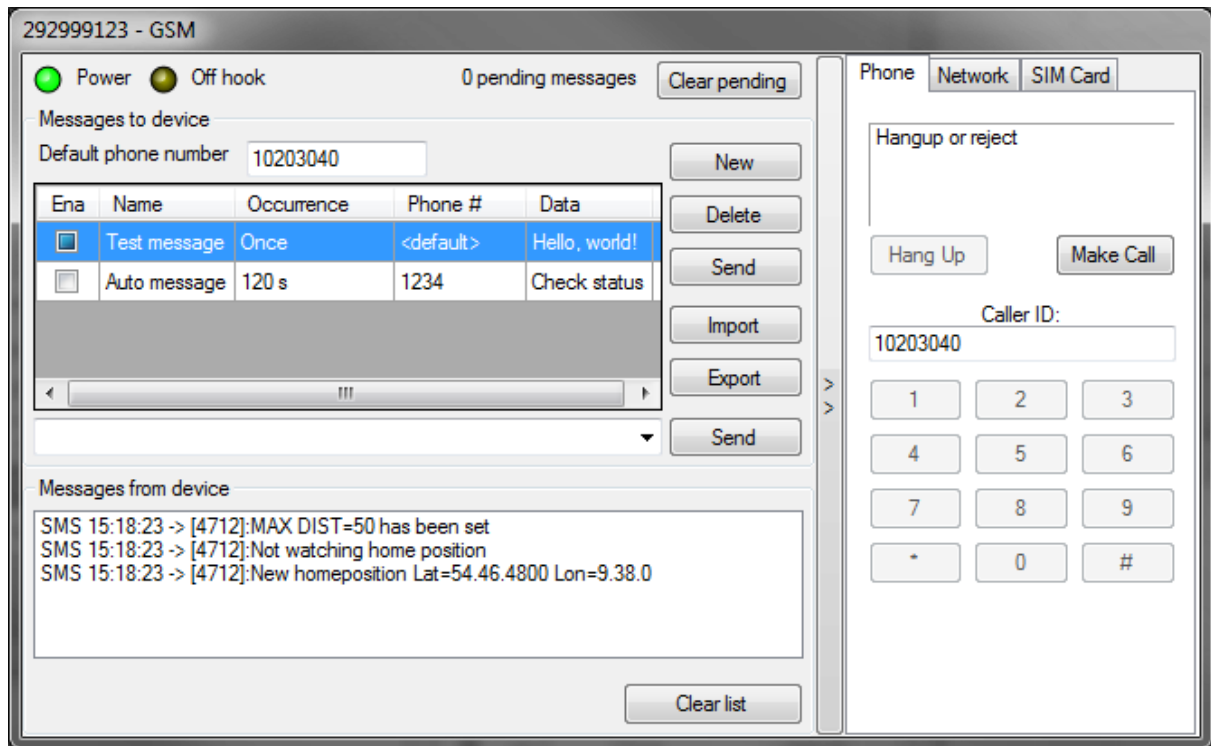
LCD display power

This option sets the behaviour of the LCD displays when the device starts (either by reset or if external power is applied).

The device must be restarted for this setting to be applied.

1.4.3.4 GSM

The GSM window provides access to the SMS features, the SIM card and some of the GSM parameters. On supported devices, the Voice features are also available.



The left panel provides access to sending and receiving SMS messages.

Messages to device

To send a simple SMS message to the device, simply enter it into the text field in the middle and click the Send button to the right of the field. It will be sent using the phone number provided in the "Default phone number" text box.

To save messages for later or to create binary messages, use the New button to create a new message, and then send it by selecting it and clicking the Send button to the right of the list.

To modify an existing message, double-click on the message.

When a message is sent, it goes onto a pending queue, waiting for the device to receive it.

When more than 50 messages are pending, the automatic sending of messages are disabled until the number of pending messages drops again.

New

To create a new message, click the "New" button.

Delete

The delete button deletes the selected message.

Send

The send button sends the selected message to the device.

Enable/Disable

Enables or disables the automatic sending of the selected message.

Export

The export button can be used to save the messages for use later on a different device. The messages are stored in a human readable XML file.

Import

The import button can be used to add previously saved messages to the list.

Clear pending

The Clear pending button is used to clear the pending messages, e.g. if they are no longer relevant.

Sending text directly

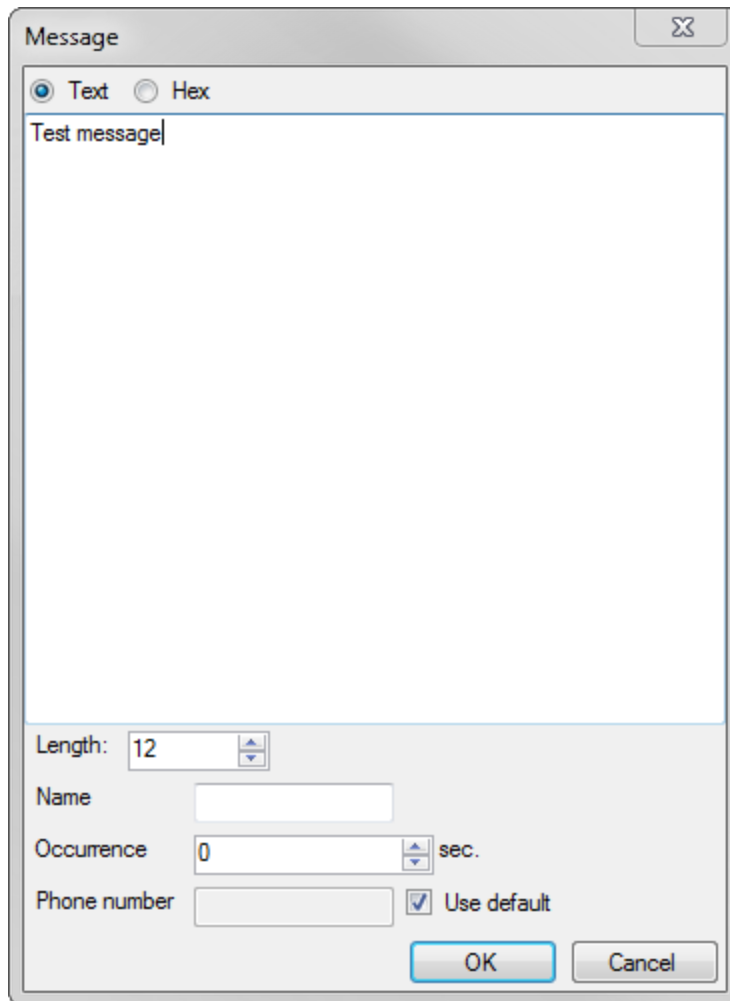
The text box and the Send button are used to write SMS messages directly, without having to create a message.

To write special characters, e.g. line breaks, the following strings can be used:

String	Result
\$\$	\$
\$"	"
\$L	Linefeed (value 10)
\$P	Form feed (value 12)
\$R	Carriage return (value 13)
\$T	Tab (value 9)
\$N	Newline (value 13, value 10)
\$xx	Value xx (xx in hex, 00..FF)

Modify messages dialog

The following dialog is used to create and modify messages.



Here the message can be entered, either as text or as binary and a name for the message can be set. If the message is binary, it will be sent as a PDU, otherwise it is sent as an SMS.

The occurrence determines if the message must be manually sent or if it automatically is sent at the specified interval, e.g. setting the occurrence to 120 seconds will send the message every two minutes. If the "Use default" check box is checked, the messages will be sent from the default phone number provided on the "Messages to device" panel, otherwise the phone number provided in the "Phone number" text box will be used.

Messages from device

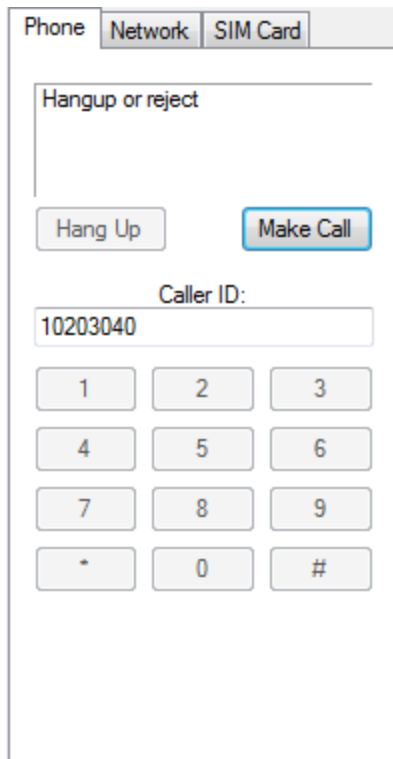
Messages received from the device are shown in the list at the bottom. Binary messages can be double-clicked to open them in a hex viewer.

Tab panel

The button between the left panel and the tab panel on the right can be used to hide the right tab panel.

Phone tab

The phone tab is only available on device with voice support. It is used to create and answer voice calls and for sending DTMF tones.



The status field at the top shows the current status of the connection.
The name of the buttons change depending on the status of the connection.

Hang Up

Ends an ongoing call.

Make Call

Initiates a call to the device

Reject

Rejects an incoming call from the device.

Answer

Accepts an incoming call from the device.

Caller ID

Sets the phone number used as caller ID when initiating a call.

Key pad

Keys to press to send the corresponding DTMF tones.

Network tab

The network tab is used to set the network parameters.

The screenshot shows the 'Network' tab of the RTCU Emulator interface. It contains several sections: 'Status' with radio buttons for 'Disconnected', 'Connected' (selected), 'Searching', and 'Access denied'; 'Available networks' with checkboxes for '2G' and '3G' (both checked); 'Antenna' with a 'Signal level' spinner set to '-67' and the text 'Internal antenna selected'; and 'Base station' with 'LAC' and 'Cell ID' spinners set to '14D5' and '100A' respectively, and a 'Current provider' dropdown menu showing '23802 (Home)'.

Status

This is the status of the connection of the device to the GSM network.

- Disconnected
 - The device is not connected to the GSM network.
- Connected
 - The device is connected to the GSM network.
- Searching
 - The device is searching for a provider.
- Access denied
 - The device cannot connect to the GSM network.

Available networks

This is used to select the networks that will be available for the device to connect to.

Signal level

This number will be presented to the RTCU when calling `gsmSignalLevel`.

For devices that can switch between internal and external antenna, the selected antenna is shown.

LAC

This number will be presented to the RTCU when calling `gsmGetLAC`.

Cell ID

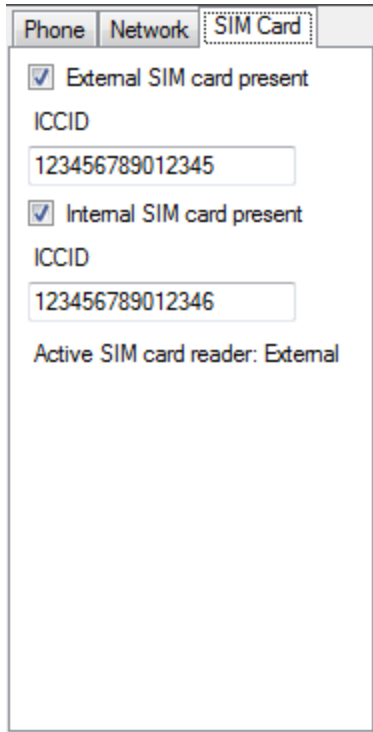
This number will be presented to the RTCU when calling `gsmGetCellID`.

Current provider

This sets the GSM PLMN (Public Land Mobile Network Number) of the provider the device is currently connected to.

SIM Card tab

The SIM Card tab is used to control the SIM card. For devices with dual SIM card readers, both SIM cards are available.



The screenshot shows a dialog box with three tabs: 'Phone', 'Network', and 'SIM Card'. The 'SIM Card' tab is selected. Inside the tab, there are two sections. The first section is titled 'External SIM card present' and has a checked checkbox. Below it is a text field labeled 'ICCID' containing the value '123456789012345'. The second section is titled 'Internal SIM card present' and also has a checked checkbox. Below it is another text field labeled 'ICCID' containing the value '123456789012346'. At the bottom of the dialog, it says 'Active SIM card reader: External'.

SIM card present

This determines whether the SIM card is present in the RTCU device.

ICCID

This sets the ICCID, the "serial number" of the SIM card.

On devices with multiple SIM Cards, the active SIM card reader is shown.

1.4.3.5 Network

This dialog allows one to set all relevant parameters for making a connection to RTCU Gateway using TCP/IP.

Please consult the technical documentation for the RTCU Gateway.

On supported devices, it is also used to control the ethernet connection.

296999123 - Network

Ethernet

☒ Cable connected

Gateway

Enable Gateway: ☒

IP: gw.rtcu.dk

Port: 5001

Key: *****

Advanced settings

Max connect attempts: 3

Max send attempts: 5

Response timeout: 45

Keep alive frequency: 300

Encryption key:

01 23 45 67 89 AB CD EF

01 23 45 67 89 AB CD EF

Fetch Apply

By using the "Fetch" button, it is possible to read the current configuration of the device, and the "Apply" button will store the current configuration in the device.

Cable connected

On devices with built in ethernet, this is used to control if a network cable is plugged in and connected to the network.

Enable Gateway

Determines if the gateway should be enabled.

IP

The IP address or symbolic name of the RTCU Gateway.

Port

The port number that is to be used for communicating with the RTCU Gateway (this is set in the RTCU Gateway).

Key

The key value that is to be used when communicating with the RTCU Gateway (this is set in the RTCU Gateway).

Advanced parameters

Maximum connect attempts

This is the maximum number of connection attempts to the RTCU Gateway before the reconnecting the mobile network to the GSM network.

Maximum send attempts

This is the maximum number of send request attempts before the send fails.

Response timeout

This is the time spent waiting for a response, and it is specified in seconds.

Keep alive frequency

Frequency for sending self-transactions through the RTCU Gateway (number of seconds between self-transactions).

The purpose of the self-transaction is to ensure a healthy two-way communication channel through the RTCU Gateway.

For applications that are only sending data from the device to the server, this frequency can safely be increased.

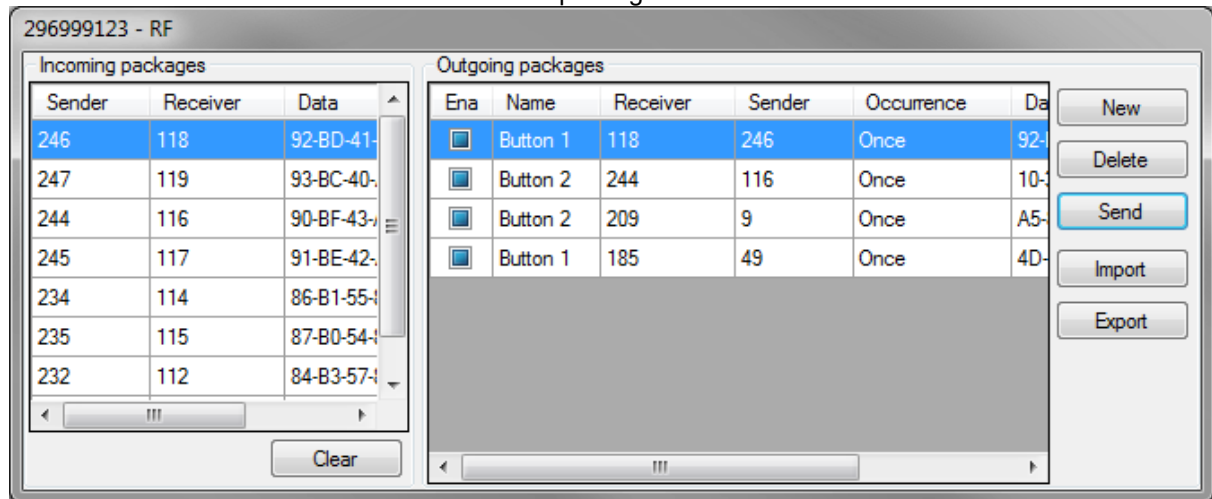
Setting the value to zero will disable the self-transactions completely.

Encryption key

The 128 bit long key used for encryption of data sent to and received from the RTCU Gateway.

1.4.3.6 RF

The RF window is used to send and receive RF packages.



Outgoing packages

The outgoing messages panel contains a list of packages that can be sent, and buttons to manage them.

To modify an existing packet, double-click on the package.

New

To create a new package, click the "New" button.

Delete

The delete button deletes the selected package.

Send

The send button sends the selected package to the device.

Enable/Disable

Enables or disables the automatic sending of the selected package.

Export

The export button can be used to save the packages for use later on a different device. The packages are stored in a human readable XML file.

Import

The import button can be used to add previously saved packages to the list.

Modify packages dialog

The following dialog is used to create and modify packages.

This dialog can both be used to send rf packages and for sending raw packets, e.g. to be able to send RFBC packets.

For raw messages, the receiver is used as the first byte and the sender is used as the second byte.

Here the data can be entered, either as text or as binary and a name for the package can be set.

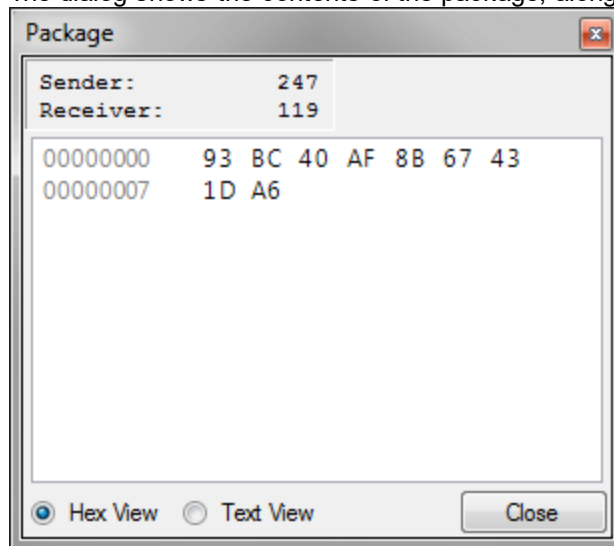
The occurrence determines if the package must be manually sent or if it automatically is sent at the specified interval, e.g. setting the occurrence to 5 seconds will send the package every 5 seconds.

Incoming packages

The incoming packages list shows all the packages received from the device. Double-clicking a package will show the package in a separate dialog:

Show package dialog

The dialog shows the contents of the package, along with the sender and receiver.



1.4.3.7 Serial Ports

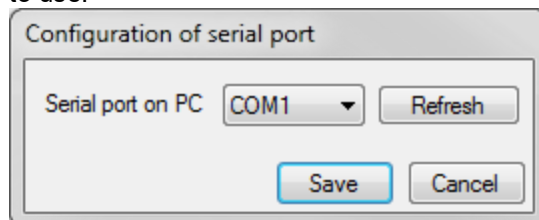
Multiple serial port implementations are available. To select between the implementation, right-click on the button for the module in the [control panel](#) and select the wanted implementation.

- [Virtual Serial Port](#) A window to communicate with the serial port.
- [Physical Serial Port](#) Use a real serial port on the computer.
- [Virtual MDT](#) A virtual MDT device to emulate connecting an MDT to the device.

1.4.3.7.1 Physical Serial Ports

The physical serial ports use a real serial port on the PC to communicate through, allowing the connection of many different kinds of peripherals(special cable may be needed).

As it uses the PC serial ports, no GUI is needed, instead a configuration dialog is used to select the port to use.



Click Refresh to refresh the list of serial ports.

If no port is specified or if it fails to open the port, a warning icon is shown on the control panel.

If an invalid port configuration is selected, an error dialog is shown and the port will not be changed.

If a device with an invalid configuration is loaded, an error icon may be shown on the control panel and it will not be possible to start the emulator until the error is fixed.

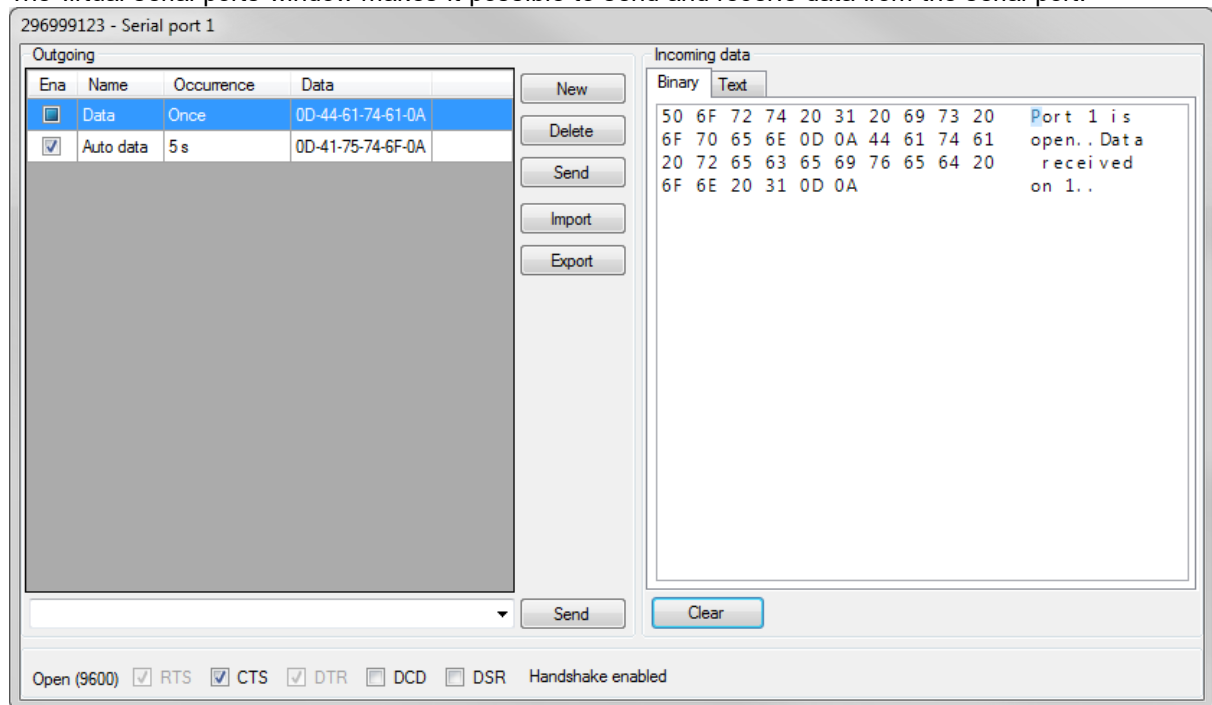
Connection to the IDE using the alternative service port

The simplest way of connecting the emulator to the IDE is to use the [virtual programming cable](#), but if the primary service port is needed by the application, it is possible to use the alternative service port instead.

Start by calling `boardSetServicePortAlt(port:=1)` on the device, and then connect the serial port used by the IDE with the serial port used by the Physical Serial Port on the emulator.
The connected serial ports can either be real serial ports that are connected using a null modem cable, or virtual serial port pairs, such as created by e.g. [com0com](#) (make sure that "use Ports class" and "enable buffer overrun" are enabled).

1.4.3.7.2 Virtual Serial Ports

The virtual serial ports window makes it possible to send and receive data from the serial port.



The left panel contains a list of packets that can be sent, and buttons to manage them. To modify an existing packet, double-click on the packet.

New

To create a new packet, click the "New" button.

Delete

The delete button deletes the selected packet.

Send

The send button sends the selected packet to the serial port.

Enable/Disable

Enables or disables the automatic sending of the selected packet.

Export

The export button can be used to save the packets for use later on a different device. The packets are stored in a human readable XML file.

Import

The import button can be used to add previously saved packets to the list.

Sending text directly

The text box and the Send button are used to write data to the serial port without having to create a packet for it.

To write special characters, e.g. start- and end-of-frame characters, the following strings can be used:

String	Result
\$\$	\$
\$"	"
\$L	Linefeed (value 10)
\$P	Form feed (value 12)
\$R	Carriage return (value 13)
\$T	Tab (value 9)
\$N	Newline (value 13, value 10)
\$xx	Value xx (xx in hex, 00..FF)

Port status

The text in the bottom left corner shows if the port is open, the baud rate and if RS485 is used.

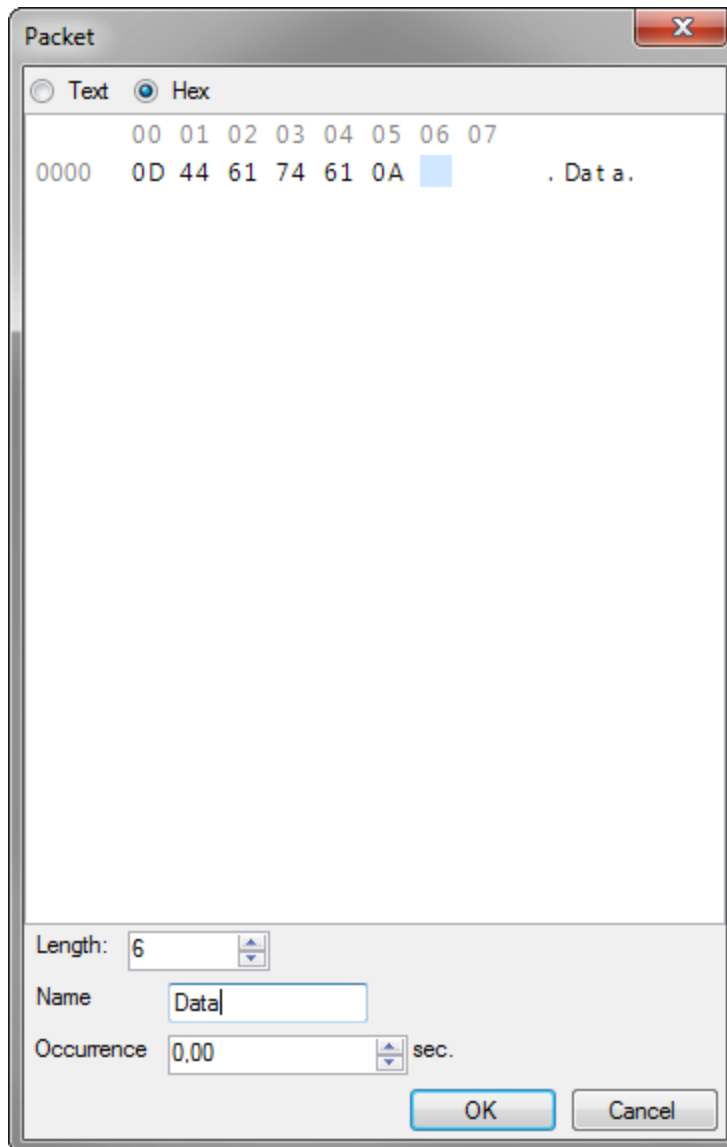
If the status is "Used by system", the port has been taken over by the system and is not connected to the VPL application. The most typical cause for this is if the programming cable is connected to the RTCU IDE.

Control signals

The check boxes at the bottom of the window shows the current status of the control signals, if available. Not that when handshaking is enabled, CTS must be set to be able to receive data.

Modify packets dialog

The following dialog is used to create and modify packets.



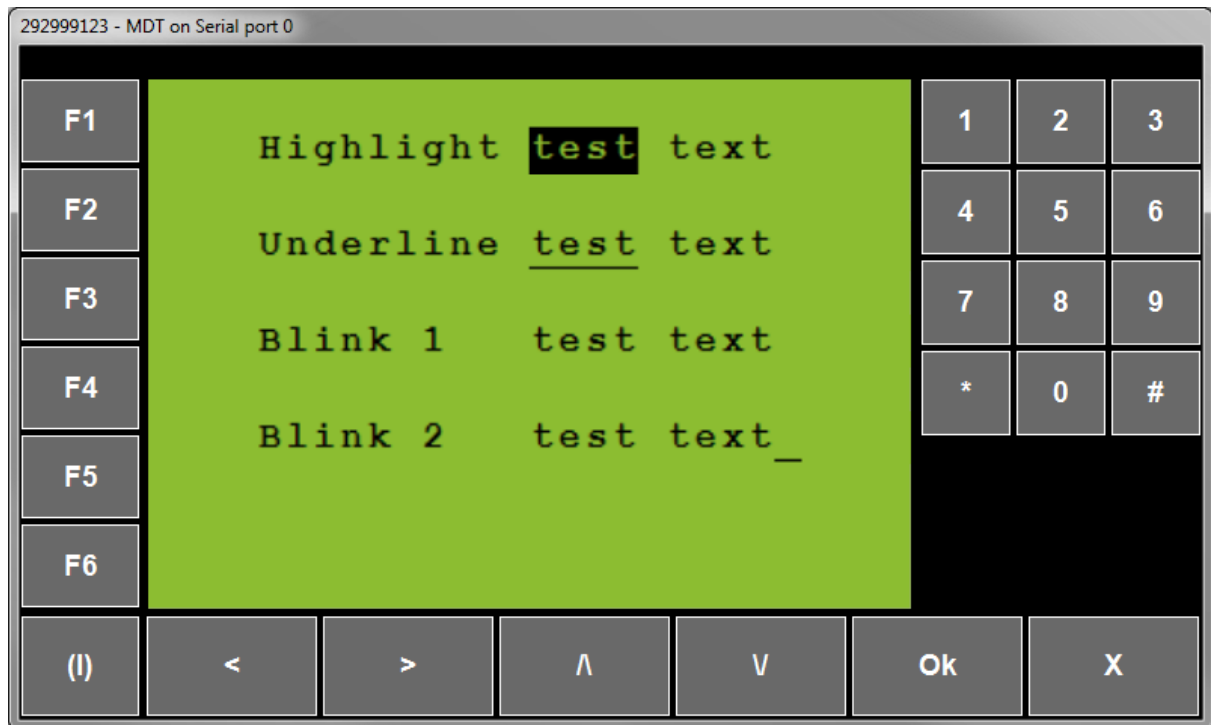
Here the data can be entered, either as text or as binary and a name for the packet can be set.

The occurrence determines if the packet must be manually sent or if it automatically is sent at the specified interval, e.g. setting the occurrence to 5 seconds will send the packet every 5 seconds.

1.4.3.7.3 Virtual MDT

The virtual MDT (Mobile Data Terminal) has all the features of the real MDT, allowing for easy testing of programs using the MDT.

Use the mouse to click on the buttons.



1.4.4 Sensors

The Sensors area contains modules used to monitor the environment.

Modules:

- [Accelerometer/Vibration](#) (only available on supported devices)
- [GPS](#) (only available on supported devices)
- [Intrusion](#) (only available on supported devices)
- [Real Time Clock](#)
- [Temperature](#)

1.4.4.1 Accelerometer/Vibration

The accelerometer/vibration window provides access to the accelerometer and the vibration sensor on supported devices.

292999123 - Accelerometer/Vibration

Acceleration

X: 0 mg

Y: 0 mg

Z: -996 mg

Set acceleration

Accelerometer Event

X: 0 mg

Y: 0 mg

Z: 0 mg

Send event

Shock Event

X: ☒ Y: ☐ Z: ☒

Send event

Vibration

Make vibration

The vibration sensor is disabled while the accelerometer is open.

Acceleration

To change the current acceleration, select the wanted acceleration on the sliders and click the Set acceleration button. This acceleration will then be used until it is changed again.

Acceleration event

To create an acceleration event, set the sliders to the size of the acceleration and click the Send event button. If the acceleration does not match the conditions for the event, no event will be created.

Shock event

To create a shock event, select the axes that the shock must happen on and click the Send event button.

Vibration

If vibration is available, a vibration can be created by clicking the Make vibration button.

1.4.4.2 GPS

The "GPS" window allows sending virtual GPS positions to the device.

292999123 - GPS

Position **GPS** SBAS GLONASS GALILEO

PDOP 1.00 In view: 24
 VDOP 1.00 Used: 10
 HDOP 1.00

Position
 Latitude 55° 51.3075'N
 Longitude 9° 51.0547'E
 Altitude 3.00 m

Movement
 Speed 5.000 km/h
 Course 3.00°

Mode
☐ No Fix
☐ 2D
☒ 3D
☐ 3D + SBAS

Antenna
☒ Present
☐ Short-circuit

☒ Power

Restore default

Power

The Power LED shows it the GPS receiver is powered on.

Restore default

Restores all the fields to their default values.

PDOP, VDOP and HDOP

Sets the DOP values for the fix.

The DOP values describe the dilution of precision in the different directions.

In view and Used

Shows the total number of satellites in view and in use, depending on the current fix mode and the [satellite configuration](#).

Latitude, Longitude and Altitude

Sets the position in space.

Speed and Course

Sets the speed and course of the position. Note that the position does not automatically update to move with the speed.

Mode

Sets the fix mode:

- No fix
- 2D fix
- 3D fix
- 3D fix + SBAS

Antenna

Allows for setting the status of the antenna.

Satellite configuration

For each supported satellite system, it is possible to control the status of the satellites

	SVID:	Elev:	Az:	SNR:	In view	Tracked	Used
Sat. 1	1	11	0	45	<input checked="" type="checkbox"/>	<input checked="" type="checkbox"/>	<input checked="" type="checkbox"/>
Sat. 2	2	12	30	45	<input checked="" type="checkbox"/>	<input checked="" type="checkbox"/>	<input checked="" type="checkbox"/>
Sat. 3	3	13	60	45	<input checked="" type="checkbox"/>	<input checked="" type="checkbox"/>	<input checked="" type="checkbox"/>
Sat. 4	4	14	90	45	<input checked="" type="checkbox"/>	<input checked="" type="checkbox"/>	<input checked="" type="checkbox"/>
Sat. 5	5	15	120	45	<input checked="" type="checkbox"/>	<input checked="" type="checkbox"/>	<input checked="" type="checkbox"/>
Sat. 6	6	16	150	45	<input checked="" type="checkbox"/>	<input checked="" type="checkbox"/>	<input type="checkbox"/>
Sat. 7	7	17	180	45	<input checked="" type="checkbox"/>	<input checked="" type="checkbox"/>	<input type="checkbox"/>
Sat. 8	8	18	210	45	<input checked="" type="checkbox"/>	<input checked="" type="checkbox"/>	<input type="checkbox"/>
Sat. 9	9	19	240	45	<input checked="" type="checkbox"/>	<input checked="" type="checkbox"/>	<input type="checkbox"/>
Sat. 10	10	20	270	45	<input checked="" type="checkbox"/>	<input checked="" type="checkbox"/>	<input type="checkbox"/>
Sat. 11	11	21	300	45	<input checked="" type="checkbox"/>	<input checked="" type="checkbox"/>	<input type="checkbox"/>
Sat. 12	12	22	330	45	<input checked="" type="checkbox"/>	<input checked="" type="checkbox"/>	<input type="checkbox"/>

GPS is enabled In view: 12 Used: 5

☒ Power Restore default

For each satellite, a number of parameters can be changed.

SVID

The number of the satellite. The range of the numbers depends on the satellite system. This field have no effect on the position.

Elevation

The elevation angle for the satellite. This field have no effect on the position.

Azimuth

The azimuth angle for the satellite.
This field have no effect on the position.

SNR

Signal-to-Noise Ratio for the satellite.
This field have no effect on the position.

In view

The satellites is visible to the receiver, but not necessarily being tracked.

Tracked

The satellite is has been found by the receiver and is being tracked.

Used

The satellite is used to calculate the position.

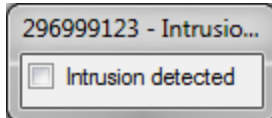
All the "In view", "Tracked" or "Used" check boxes can be checked or unchecked by right-clicking on the header and selecting the correct option in the context menu.

Status

The status text in the bottom shows if the satellite system is enabled and the total number of satellites for this system used and in view.

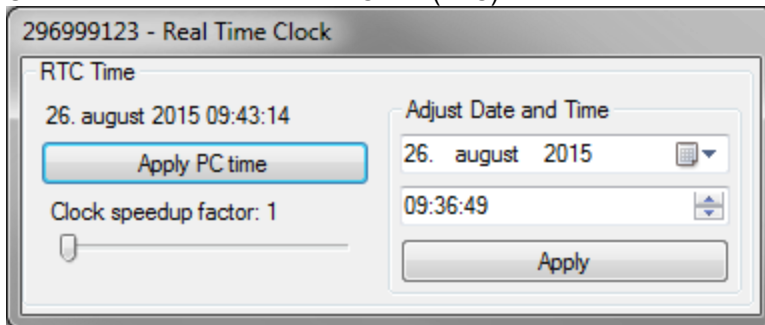
1.4.4.3 Intrusion

Check the check box to report an intrusion.



1.4.4.4 Real Time Clock

Used to control the Real Time Clock (RTC) in the device.



Apply PC time

This button sets the RTC to the current time in the PC.

Adjust Date And Time

This panel can be used to the the RTC to a specific time.

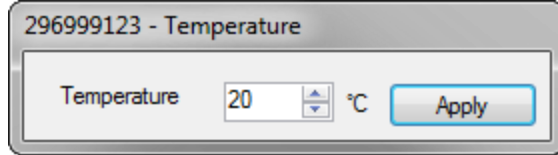
Clock speedup factor

Increasing the speedup factor allows for quickly reaching a future time.

Note that the real time clock is only used for date functions and does not effect the execution speed or the different delays.

1.4.4.5 Temperature

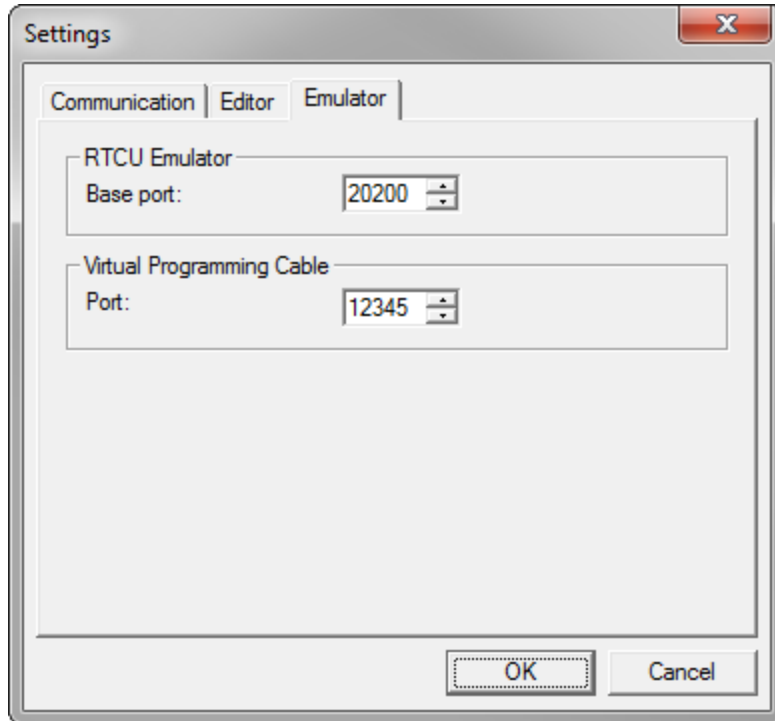
Used to control the internal temperature of the device.



Integration with the RTCU IDE

2 Integration with the RTCU IDE

The RTCU Emulator can communicate with the RTCU IDE using two different channels, both of which have settings on the Emulator tab of the Settings dialog in the RTCU IDE.



Settings dialog in RTCU IDE version 8.30

RTCU Emulator Base port

The RTCU Emulator can be run both standalone and from within the RTCU IDE. When run from the RTCU IDE, some management of the Emulator can be done from the IDE, e.g. to bind the current working project to the ['Load & Run' button](#) allowing for fast loading and easy debugging of projects during application development.

The base port is used to specify the port range to use for the management connection.

Virtual Programming Cable Port

The IDE can also connect to the Emulator using a virtual programming cable, allowing the Emulator to be controlled identically to a real device, connected using a physical programming cable.

If the device uses a serial port as the primary service port, the serial port will be disconnected from VPL while the virtual programming cable is connected to the IDE, and the control panel will show that the serial port is being used by the system.

The Virtual Programming Cable Port determines which TCP port to use for this connection. Make sure that the port matches the port specified in the [Emulator settings](#).

For further details see the current **RTCU IDE** documentation.

Contact information

3 Contact information

You can contact us in one of the following ways:

Logic IO ApS
Holmboes Allé 14
DK-8700 Horsens
Denmark

Tel: (+45) 76 25 02 10
Fax: (+45) 76 25 02 11
web: www.logicio.com
Email: info@logicio.com
Support: support@logicio.com